

HARRIS COUNTY FELONY PRETRIAL DETENTION REPORT

Brought to you by the Texas Criminal Justice Coalition and researchers at Harvard University

April 25, 2021 - May 1, 2021



Josh Hill – 232nd District Court

Among current pretrial jail inmates assigned to Judge Hill:

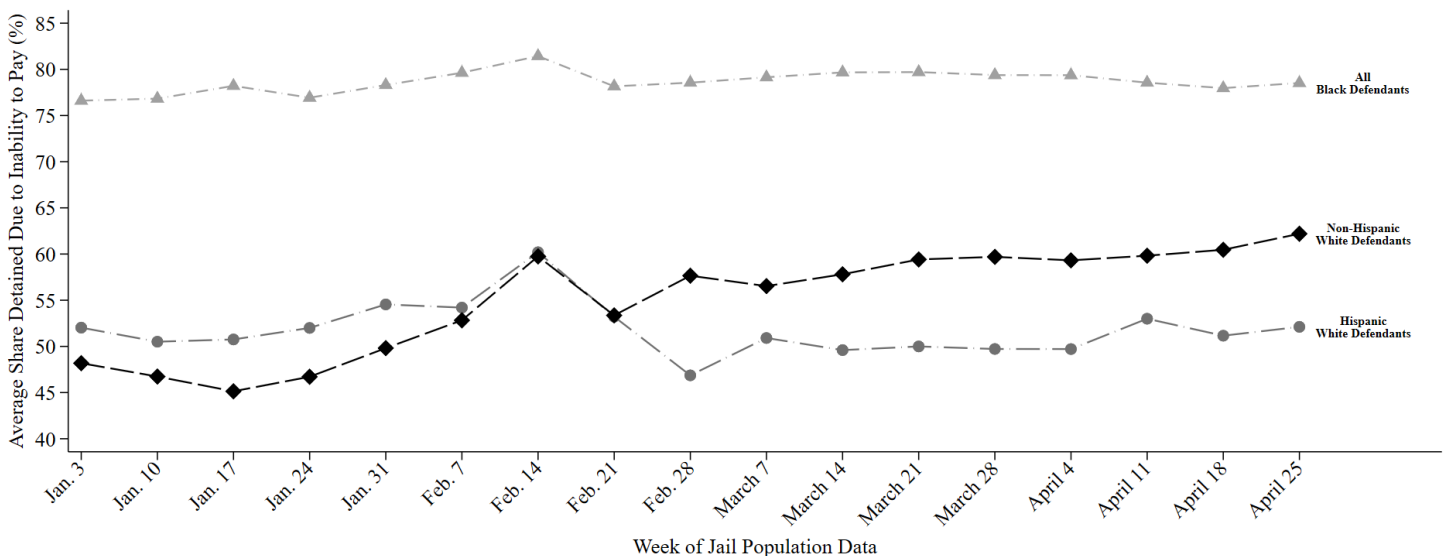
- **79% of Black defendants (99 out of 126)**
- **52% of Hispanic White defendants (23 out of 44)**
- **62% of non-Hispanic White defendants (58 out of 94)**

were detained per night based on inability to pay

Last week, among current pretrial jail inmates assigned to Judge Hill, 79% of Black defendants (99 out of 126 on an average night), 52% of Hispanic White defendants (23 out of 44 on an average night), and 62% of non-Hispanic White defendants (58 out of 94 on an average night) were detained in Harris County Jail because they couldn't afford money bail.

Judge Hill's racial difference in the share detained due to inability to pay for Black and Non-Hispanic White defendants is among the 50% best in Harris County. His racial difference in the share detained due to inability to pay for Hispanic and Non-Hispanic White defendants is among the 50% worst in Harris County.

Track Judge Hill's Share Detained Due to Inability to Pay



This report uses jail population data provided by Harris County. Share detained due to inability to pay represents the percent of current pretrial jail inmates assigned to this judge who were detained because they couldn't afford money bail.