

# HARRIS COUNTY FELONY PRETRIAL DETENTION REPORT

Brought to you by the *texas* Center for Justice and Equity and researchers at Harvard University

April 16, 2023 - April 22, 2023



## Ramona Franklin – 338<sup>th</sup> District Court

Among current pretrial jail inmates assigned to Judge Franklin:

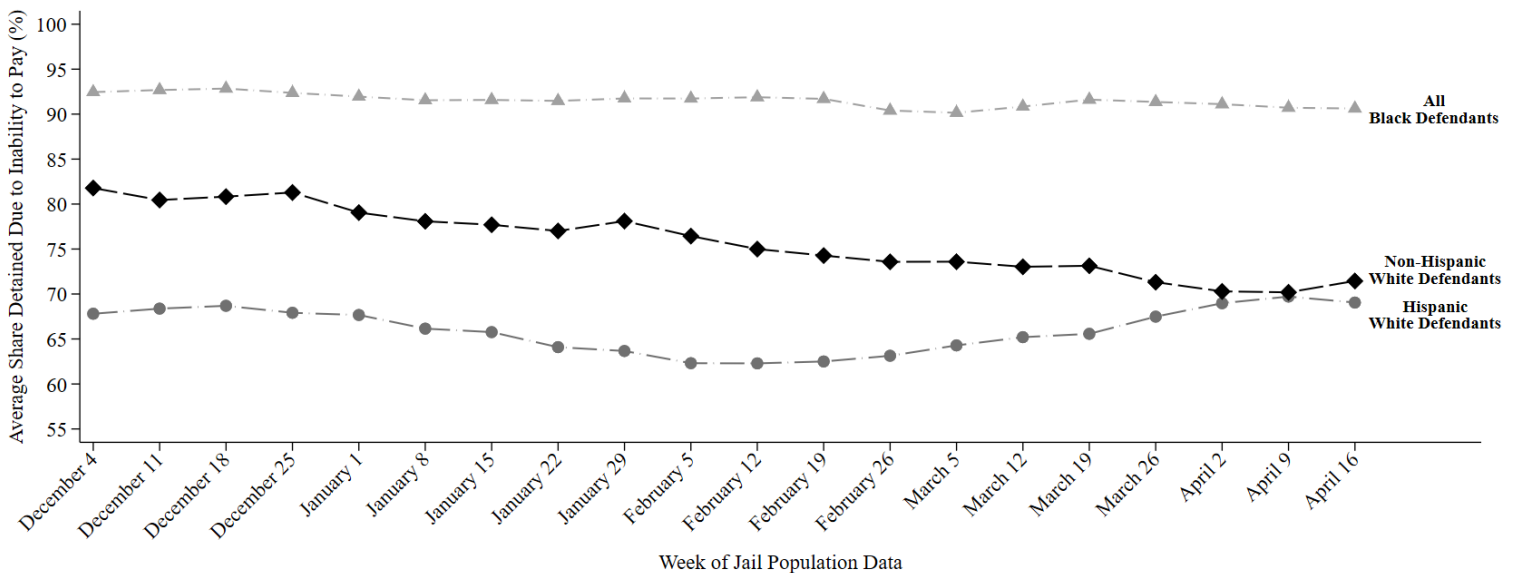
- **91% of Black defendants (182 out of 201)**
- **69% of Hispanic White defendants (92 out of 134)**
- **71% of non-Hispanic White defendants (62 out of 87)**

were detained per night based on inability to pay

Last week, among current pretrial jail inmates assigned to **Judge Franklin**, **91% of Black defendants (182 out of 201 on an average night)**, **69% of Hispanic White defendants (92 out of 134 on an average night)**, and **71% of non-Hispanic White defendants (62 out of 87 on an average night)** were detained in Harris County Jail because they couldn't afford money bail.

Judge Franklin's **racial difference in the share detained due to inability to pay for Black and Non-Hispanic White defendants** is among the **25% worst** in Harris County. Her **racial difference in the share detained due to inability to pay for Hispanic and Non-Hispanic White defendants** is among the **25% best** in Harris County.

## Track Judge Franklin's Share Detained Due to Inability to Pay



This report uses jail population data provided by Harris County. Share detained due to inability to pay represents the percent of current pretrial jail inmates assigned to this judge who were detained because they couldn't afford money bail.