

HARRIS COUNTY FELONY PRETRIAL DETENTION REPORT

Brought to you by the *texas Center for Justice and Equity* and researchers at *Harvard University*

July 24, 2022 - July 30, 2022



Ramona Franklin – 338th District Court

Among current pretrial jail inmates assigned to Judge Franklin:

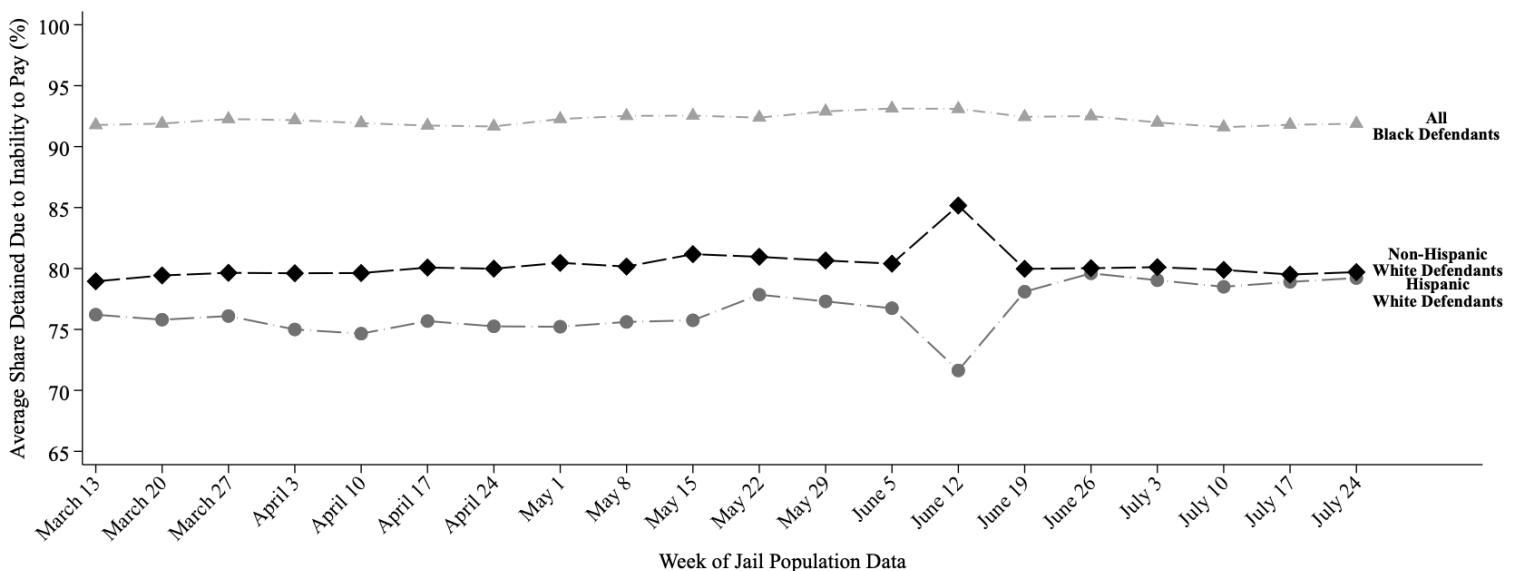
- **92% of Black defendants (254 out of 276)**
- **79% of Hispanic White defendants (93 out of 117)**
- **80% of non-Hispanic White defendants (154 out of 193)**

were detained per night based on inability to pay

Last week, among current pretrial jail inmates assigned to **Judge Franklin**, **92% of Black defendants (254 out of 276 on an average night)**, **79% of Hispanic White defendants (93 out of 117 on an average night)**, and **80% of non-Hispanic White defendants (154 out of 193 on an average night)** were detained in Harris County Jail because they couldn't afford money bail.

Judge Franklin's **racial difference in the share detained due to inability to pay for Black and Non-Hispanic White defendants** is among the **50% best** in Harris County. Her **racial difference in the share detained due to inability to pay for Hispanic and Non-Hispanic White defendants** is among the **25% best** in Harris County.

Track Judge Franklin's Share Detained Due to Inability to Pay



This report uses jail population data provided by Harris County. Share detained due to inability to pay represents the percent of current pretrial jail inmates assigned to this judge who were detained because they couldn't afford money bail.